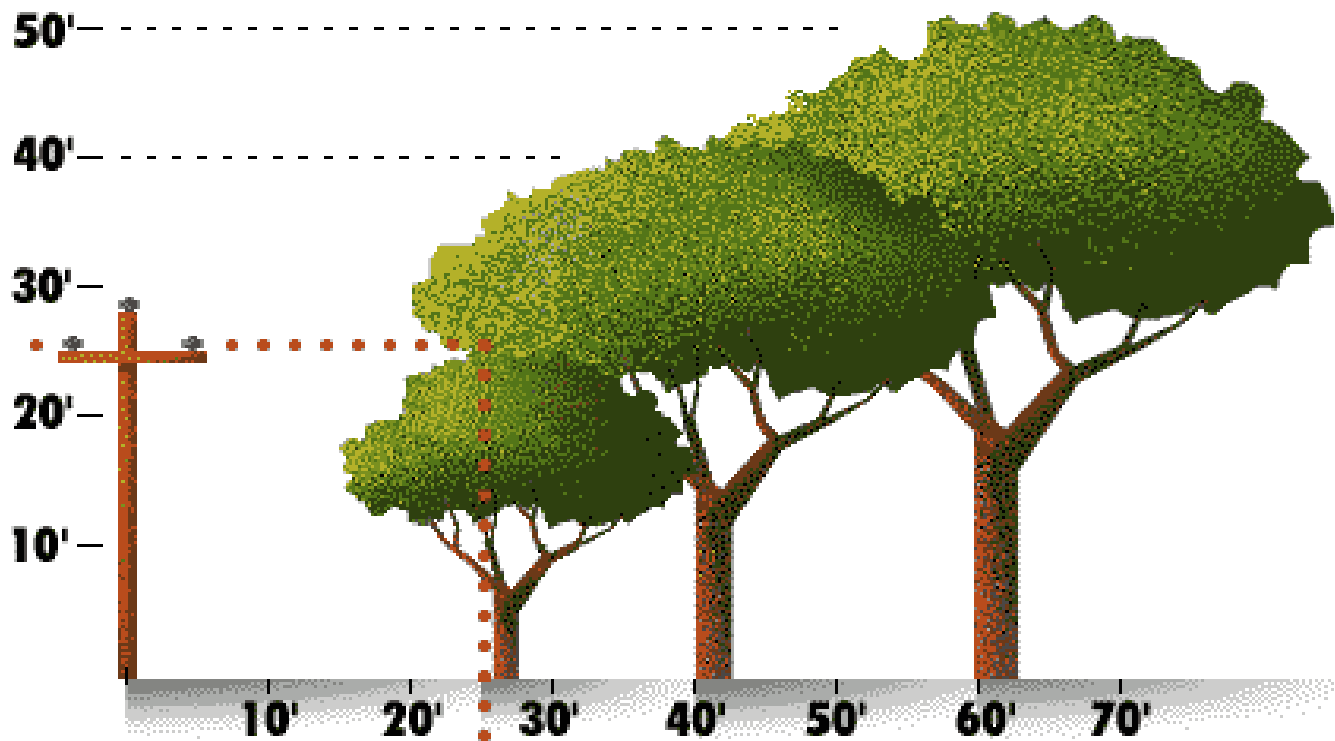


## Think Power Lines. . .Plant Smart

Please remember trees or palms that interfere with Valley Electric's power lines can lead to:

- ◆ A fire hazard
- ◆ Trees becoming energized and dangerous to anyone that comes in contact
- ◆ Outages caused by the trees
- ◆ A dangerous situation for VEA linemen and tree trimmers
- ◆ Possible expenses that may affect you

Planting trees or palms with this in mind will save costs for the Cooperative and you as well as providing a safer working environment.



### **STOP**

**No Tree Zone**  
No Trees within  
25' of power lines

### **CAUTION**

**Small Tree Zone**  
Plant trees less  
than 25' in height  
or spread at least  
25' from overhead  
power lines

### **CAUTION**

**Medium Tree Zone**  
Plant trees 25'-40'  
in height or spread  
at least 40' from  
overhead power  
lines

### **GO**

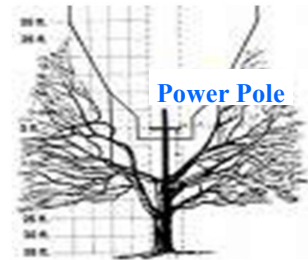
**Large Tree Zone**  
Plant trees larger  
than 40' in height  
spread at least 60"  
from overhead  
lines.

Below are examples of trees trimmed to ensure they do not interfere with utility lines. It costs the Cooperative money to trim trees and can cause them to look unsightly.

Please help us keep your trees beautiful by following the tree planting guidelines on the other side of this flyer to ensure your trees don't end up looking like this.

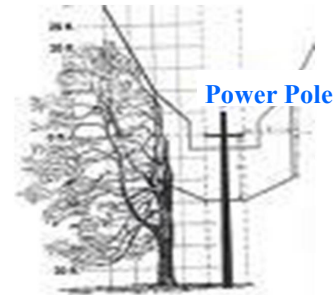
### Tree Trimming - **Valley Electric Association**

#### V-Cut



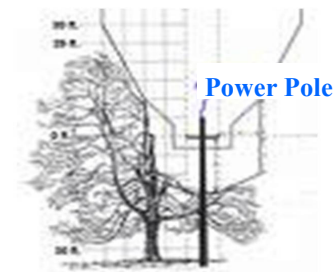
In V-Cutting, branches are pruned back toward the center of the tree crown

#### Side



Side-trimming prunes back branches on the side of the tree.

#### Notch



Side-trimming prunes back branches on the side of the tree.

If you have any questions please call VEA at: **(775) 727-5312**

If you would like more information about VEA please visit our website at: **[www.vea.coop](http://www.vea.coop)**